

res art



FOND(VALLE



nuove sperimentazioni tra arte e tecnologia

New, experimental fusions of art and technology
De nouvelles expérimentations entre art et technologie
Neue Versuche zwischen Kunst und Technologie

Superfici in divenire sospese tra realtà e immaginazione, intrise di manualità e artigianalità, ricche di tecnica ed esperienza, si estendono attraverso nuove texture, colori e dimensioni. Res Art interpreta gli originali effetti materici della resina spatolata e lavorata a mano per trasferirli su lastre in gres porcellanato di grande formato.

L'intensità e il calore di una materia semplice ma ricca di suggestioni artistiche si concretizza in nuove soluzioni a pavimento e rivestimento, per progetti integrati di grande forza espressiva.

Suspended between reality and imagination, these budding collections - imbued with manual excellence and craftsmanship, rich in technique and experience - gradually grow with the introduction of new textures, colours, and sizes. Res Art recreates all the original texture effects of trowel-applied, hand-worked resin and transfers them to large porcelain stoneware slabs. The intensity and warmth of a simple, yet artistically rich, material is captured to perfect effect in these new floor and wall solutions for high-impact, all-encompassing designs.

Des surfaces en évolution suspendues entre la réalité et l'imagination, imprégnées de manualité et d'artisanalité, riches en technique et en expérience, s'étendent à travers de nouvelles textures, teintes et dimensions. Res Art interprète les effets matiéristes originaux de la résine appliquée à la spatule, et travaillée à la main pour les transférer sur des dalles en grès cérame dans grand format. L'intensité et la chaleur d'une matière simple mais riche en suggestions artistiques se concrétisent à travers de nouvelles solutions pour les sols et les murs, dans le cadre de projets intégrés d'une grande force d'expression.

Entstehende Oberflächen, schwebend zwischen Realität und Vorstellung, geprägt von Handarbeit und Handwerk, reich an Technik und Erfahrung, erstrecken sich durch neue Texturen, Farben und Abmessungen. Res Art interpretiert die originellen materiellen Effekte des gespachtelten und von Hand bearbeiteten Harzes, um sie auf Platten aus Feinsteinzeug im Großformat. Die Intensität und die Farbe einer einfachen aber an künstlerischen Eindrücken reichen Materie konkretisiert sich in neuen Lösungen für Boden- und Wandbeläge, für Projekte mit einer großen Ausdruckskraft.

texture patinate e profonde, piacevoli al tatto

Intense glossy textures that cry out to be touched
Des textures patinées et profondes, agréables au toucher
Mit Patina überzogene und tiefe Texturen mit angenehmer Haptik

Protagoniste delle nuove tendenze, le tonalità di Res Art sono immerse nella profondità di una texture a rilievo patinata e piacevole al tatto. Una mirabile interpretazione della resina nella sua estetica più pura, a tratti quasi cerata, grazie agli effetti di rifrazione della luce, disegna ambienti minimali e ricercati allo stesso tempo. La collezione si compone di una gamma di colori neutri, con accenti caldi e tonalità verdi/azzurre, pensata per dialogare con una ricca varietà di superfici in abbinamento, per costruire spazi di naturale bellezza trasversali a ogni stile.

Shining stars of the latest trends, the Res Art shades lend depth through a highly textured material with a waxy finish that cries out to be touched. A beautiful recreation of resin in its purest form. With light bouncing off the material creating an almost wax-like finish, this line lends designs a minimal yet sophisticated tone. The collection, which features a subtle colour palette with warm accents and green and blue tones, is designed to work with a vast assortment of offerings to create naturally beautiful spaces that go hand in hand with any style.

Protagonistes des nouvelles tendances, les tonalités de Res Art sont immergées dans la profondeur d'une texture en relief patinée et agréable au toucher. Une interprétation admirable de la résine dans son esthétique la plus pure, parfois presque cirée, grâce aux effets de la réfraction de la lumière, dessine des espaces à la fois minimaux et raffinés. La collection est composée d'une gamme de couleurs neutres, aux accents chauds et aux nuances vertes/bleu clair, conçue pour dialoguer avec une riche variété de surfaces assorties, pour construire des espaces d'une beauté naturelle transversaux à chaque style.

Als Protagonisten der neuen Trends sind die Farbtöne von Res Art in die Tiefe einer Textur mit patiniertem Relief eingetaucht, das sich angenehm anfühlt. Eine wunderbare Interpretation des Harzes in seiner reinsten Form, dank der Effekte der manchmal beinahe wachsartigen Lichtbrechung, die minimale und gleichzeitig auserlesene Umgebungen zeichnet. Die Kollektion umfasst eine neutrale Farbpalette mit warmen Akzenten sowie Grün-/Blautönen, die für den Dialog mit einer breiten Vielfalt passender Oberflächen konzipiert wurden, um Räume von natürlicher Schönheit zu schaffen, die sich für jeden Stil eignen.





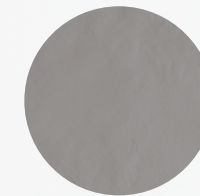
Porcelain stoneware slabs
120x278 120x120 60x120 cm



TALC



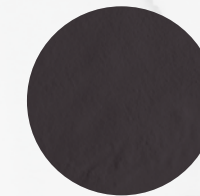
ASH



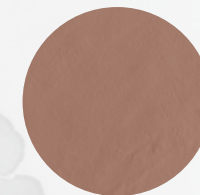
POWDER



MUD



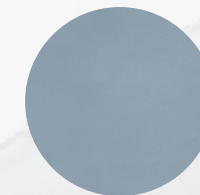
LAVA



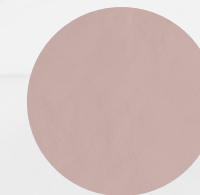
POTTERY



OLIVE



AVIO



CAMEO

colori densi ridisegnano i contorni dell'abitare

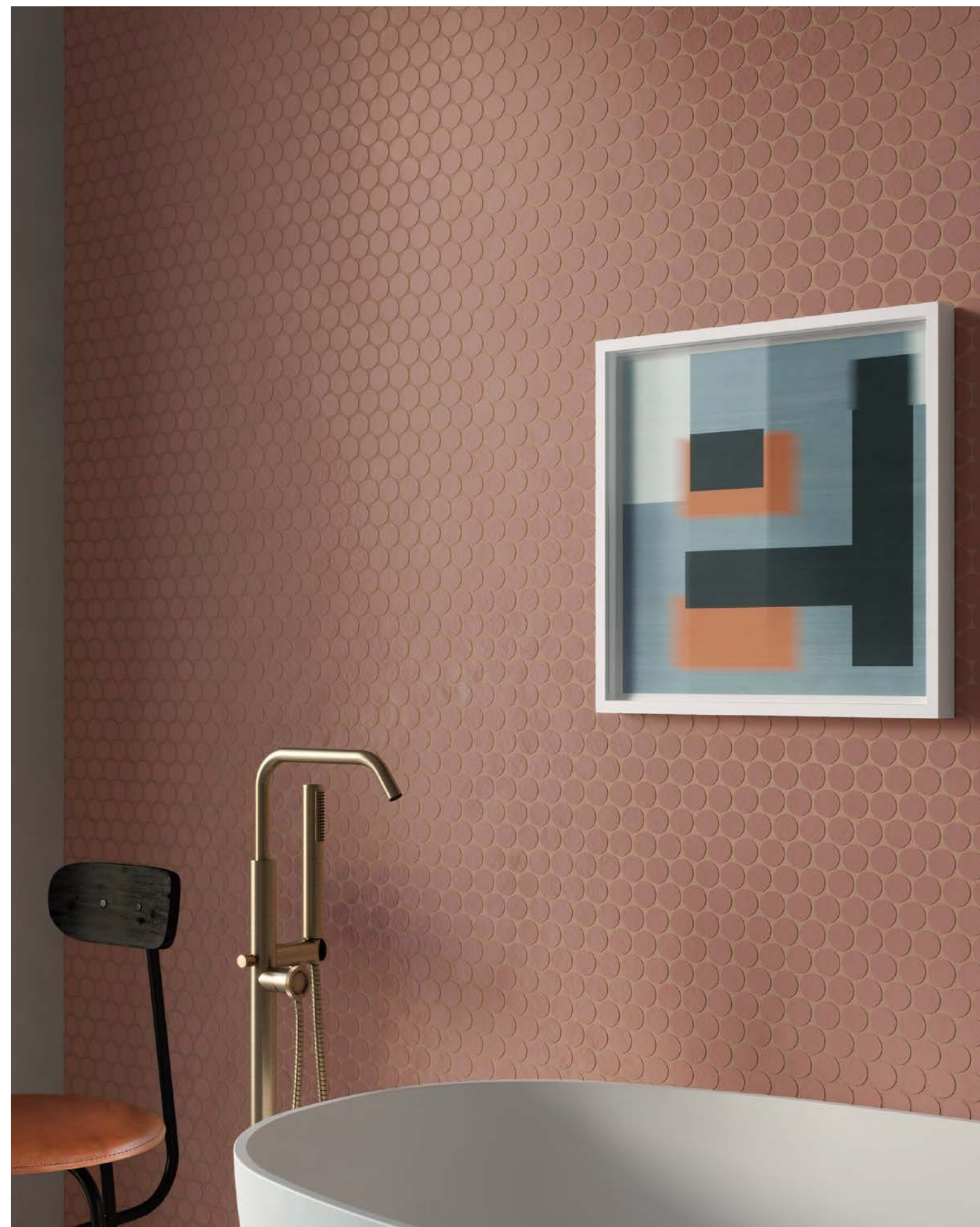
Solid shades that redefine the shapes of living spaces
Des couleurs denses redessinent les contours du mode de vie
Kräftige Farben zeichnen die Konturen des Wohnens

res art
POTTERY / MUD

sfondi contemporanei per soluzioni creative

Contemporary background tiles for creative solutions
Des fonds contemporains pour des solutions créatives
Moderne Hintergründe für kreative Lösungen

Res Art Mosaico Ball Pottery 28,8x31,2 . 11,34"x12,28"





Res Art Pottery 120x278 . 47,24"x109,45"
Res Art Mosaico Ball Pottery 28,8x31,2 . 11,34"x12,28"
Res Art Mud 120x120 . 47,24"x47,24"



Res Art Mud 120x120 . 47,24"x47,24"
Furniture: Res Art Pottery



res art
OLIVE

incontri di forme e materia dal design disinvolto

Form meets matter to casual effect
Des rencontres de formes et de matières
avec un design désinvolte
Begegnung zwischen Formen und Materie
mit einem zwanglosen Design

Listello Res Art Olive 5x30 . 1,97"x11,81"
Keynote Amber 60x120 . 23,62"x47,24"



Listello Res Art Olive 5x30 . 1,97"x11,81"
Keynote Amber 60x120 . 23,62"x47,24"



res art
AVIO

visioni d'insieme dal segno eclettico

Eclectic perspectives
Visions d'ensemble au signe éclectique
Ansichten eklektischer Art

Res Art Avio 120x278 . 47,24"x109,45"
Listello Res Art Avio 5x30 . 1,97"x11,81"
Keynote Cool Grey 80x80 . 31,50"x31,50"





res art
CAMEO

ambienti armonici dai contorni vividi e sofisticati

Harmonious interiors with vibrant, sophisticated accents
Des espaces harmonieux aux contours vifs et sophistiqués
Harmonische Räume mit lebhaften und raffinierten Konturen

Res Art Cameo 120x278 . 47,24"x109,45"
Res Art Cameo 120x120 . 47,24"x47,24"



Res Art Cameo 120x278 . 47,24"x109,45"
Res Art Cameo 120x120 . 47,24"x47,24"

res art
POWDER

ampiezza di superfici, pienezza di emozioni

Expanses of material, endless sensations
L'amplitude de surfaces, une plénitude d'émotions
Größe der Oberflächen, Fülle der Emotionen

Res Art Powder 120x120 . 47,24"x47,24"
Komi Natural 40x240 . 15,75"x94,49"





Res Art Powder 120x120 . 47,24"x47,24"
Komi Natural 40x240 . 15,75"x94,49"





res art
ASH

suggerzioni naturali e tattili, di luce e design

Natural beauty, paired with texture, light, and design
Des suggestions naturelles et tactiles, de lumière et de design
Natürliche und spürbare Eindrücke, von Licht und Design

Res Art Ash 120x278 . 47,24"x109,45"



Res Art Ash 120x278 . 47,24"x109,45"
 Res Art Ash 60x120 . 23,62"x47,24"
 Dream Jungle 120x278 . 47,24"x109,45"





Res Art Ash 120x278 . 47,24"x109,45"
Dream Jungle 120x278 . 47,24"x109,45"

res art
LAVA / TALC

materiali evoluti per spazi raffinati

Advanced materials for elegant spaces
Des surfaces évoluées pour des espaces raffinés
Entwickelte Oberfläche für raffinierte Räume

Res Art Lava 120x278 . 47,24"x109,45"
Res Art Talc 120x120 . 47,24"x47,24"





36 RES ART

37 RES ART

Res Art Lava 120x278 . 47,24"x109,45"
Res Art Talc 120x120 . 47,24"x47,24"



Res Art Talc 120x120 . 47,24"x47,24"



res art

Lastre di ceramica in gres porcellanato - Gruppo Bla UGL
 Porcelain stoneware slabs - Gruppe Bla UGL
 Dalles en céramique en grès cérame - Group Bla UGL
 Keramikplatten aus Feinsteinzeug - Gruppe Bla UGL

THICKNESS



6 mm
 SELF LEVELING

SURFACES

Natural
 Rettificato | Rectified |
 Rectifié | Rektifiziert

TECH INFO



BS EN 16165_C >
 Dry & Wet rubber 4S:
 on request ≥ 36
 AS 4586 > P3: on request
 UNE-ENV 12633 >
 Class 2: on request



120x278*
 47,24"x109,45"



120x120
 47,24"x47,24"



60x120
 23,62"x47,24"

* Lastre realizzate attraverso impasti colorati con colori standard | Slabs produced using coloured body mix available in standard shades

COLORS



TALC

ASH

POWDER

MUD

LAVA



POTTERY



OLIVE

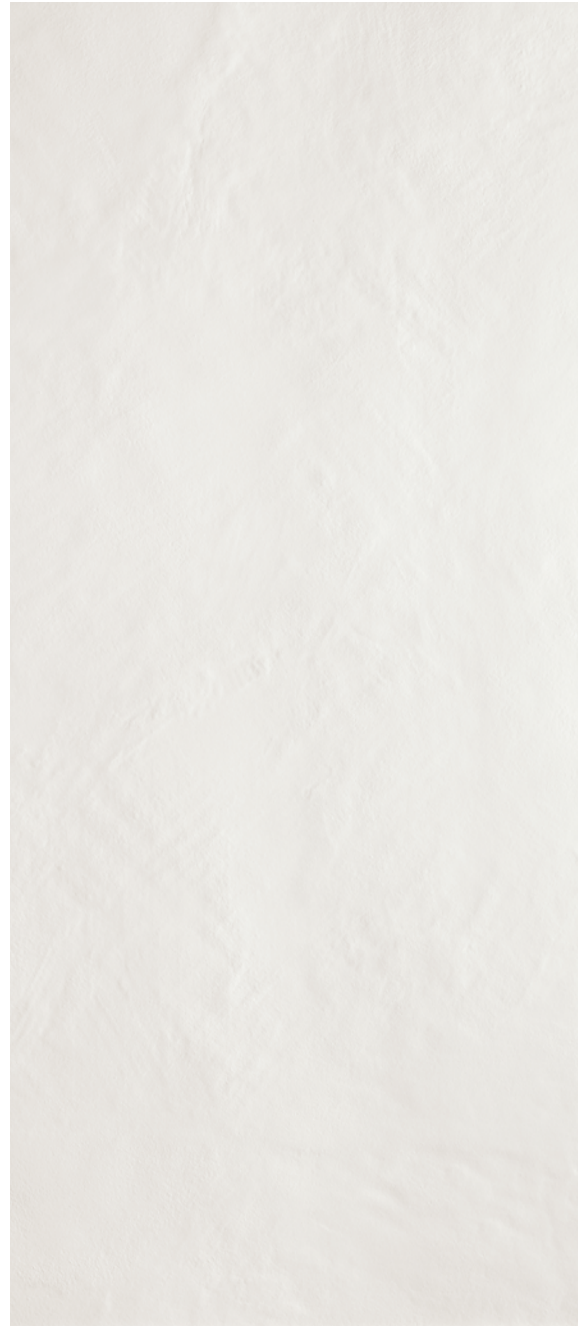


AVIO



CAMEO

res art



SIZES & SURFACES



120x278*
47,24"x109,45"



120x120
47,24"x47,24"



60x120
23,62"x47,24"

Natural
Rettificato | Rectified |
Rectifié | Rektifiziert

6 mm

120x278 . 47,24"x109,45"
RES217

120x120 . 47,24"x47,24"
RES178

60x120 . 23,62"x47,24"
RES192



6 mm
5x30 . 1,97"x11,81"
listello
RES259

Suggested grout
103 . Moon White



6 mm
8x120 . 3,15"x47,24"
battiscopa
RES199

6 mm
33x120x5 . 12,99"x47,24"x1,97"
gradino lineare LL
RES078

6 mm
33x120x5 . 12,99"x47,24"x1,97"
gradino angolare LL
RES085



SIZES & SURFACES



120x278*
47,24"x109,45"



120x120
47,24"x47,24"



60x120
23,62"x47,24"

Natural
Rettificato | Rectified |
Rectifié | Rektifiziert

6 mm

120x278 . 47,24"x109,45"
RES218

120x120 . 47,24"x47,24"
RES179

60x120 . 23,62"x47,24"
RES193



6 mm
5x30 . 1,97"x11,81"
listello
RES260

Suggested grout
112 . Medium Grey

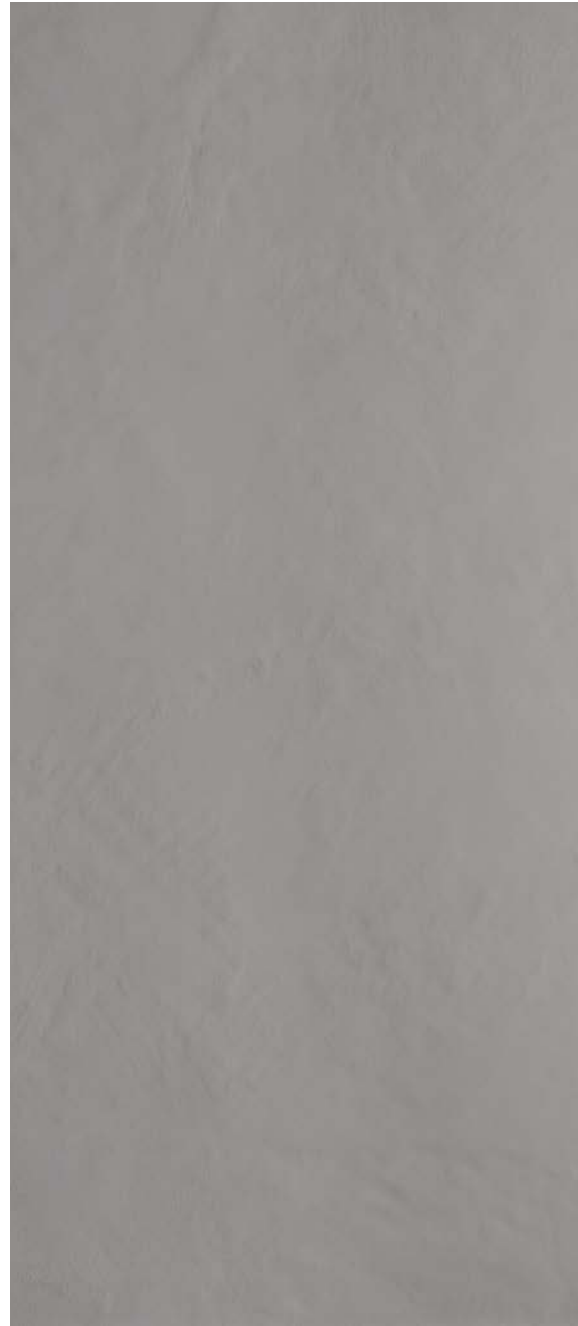


6 mm
8x120 . 3,15"x47,24"
battiscopa
RES200

6 mm
33x120x5 . 12,99"x47,24"x1,97"
gradino lineare LL
RES079

6 mm
33x120x5 . 12,99"x47,24"x1,97"
gradino angolare LL
RES086

res art



SIZES & SURFACES



120x278*
47,24"x109,45"



120x120
47,24"x47,24"



60x120
23,62"x47,24"

Natural
Rettificato | Rectified |
Rectifié | Rektifiziert

6 mm

120x278 . 47,24"x109,45"
RES219

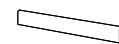
120x120 . 47,24"x47,24"
RES180

60x120 . 23,62"x47,24"
RES194



6 mm
5x30 . 1,97"x11,81"
listello
RES261

Suggested grout
119 . London Grey



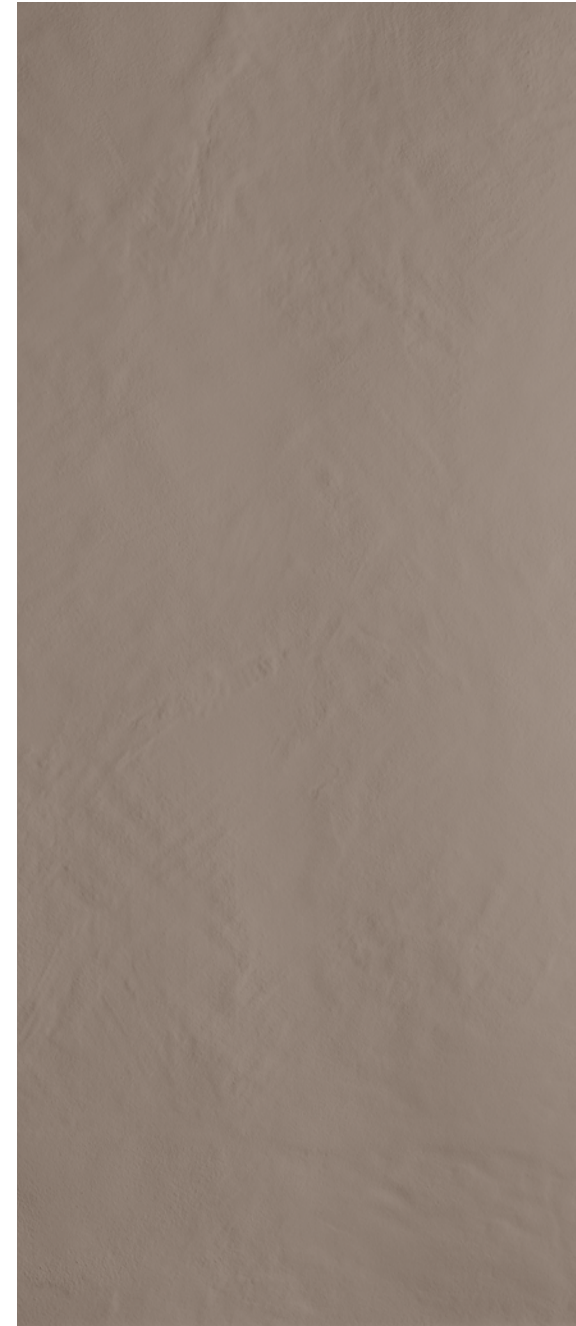
6 mm
8x120 . 3,15"x47,24"
battiscopa
RES201



6 mm
33x120x5 . 12,99"x47,24"x1,97"
gradino lineare LL
RES080



6 mm
33x120x5 . 12,99"x47,24"x1,97"
gradino angolare LL
RES087



SIZES & SURFACES



120x278*
47,24"x109,45"



120x120
47,24"x47,24"



60x120
23,62"x47,24"

Natural
Rettificato | Rectified |
Rectifié | Rektifiziert

6 mm

120x278 . 47,24"x109,45"
RES220

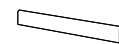
120x120 . 47,24"x47,24"
RES181

60x120 . 23,62"x47,24"
RES195



6 mm
5x30 . 1,97"x11,81"
listello
RES262

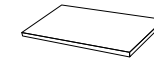
Suggested grout
113 . Cement Grey



6 mm
8x120 . 3,15"x47,24"
battiscopa
RES202



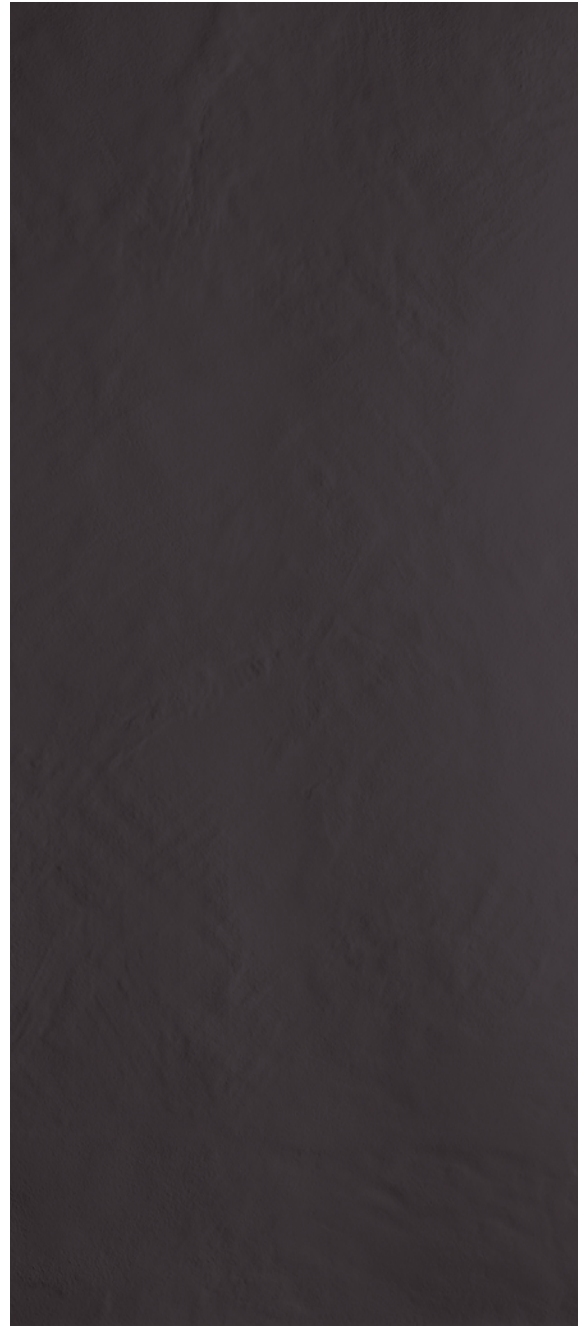
6 mm
33x120x5 . 12,99"x47,24"x1,97"
gradino lineare LL
RES081



6 mm
33x120x5 . 12,99"x47,24"x1,97"
gradino angolare LL
RES088

res art

46 RES ART



SIZES & SURFACES



120x278*
47,24"x109,45"



120x120
47,24"x47,24"



60x120
23,62"x47,24"

Natural
Rettificato | Rectified |
Rectifié | Rektifiziert

6 mm

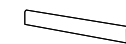
120x278 . 47,24"x109,45"
RES221

120x120 . 47,24"x47,24"
RES182

60x120 . 23,62"x47,24"
RES196



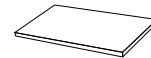
6 mm
5x30 . 1,97"x11,81"
listello
RES263



6 mm
8x120 . 3,15"x47,24"
battiscopa
RES203

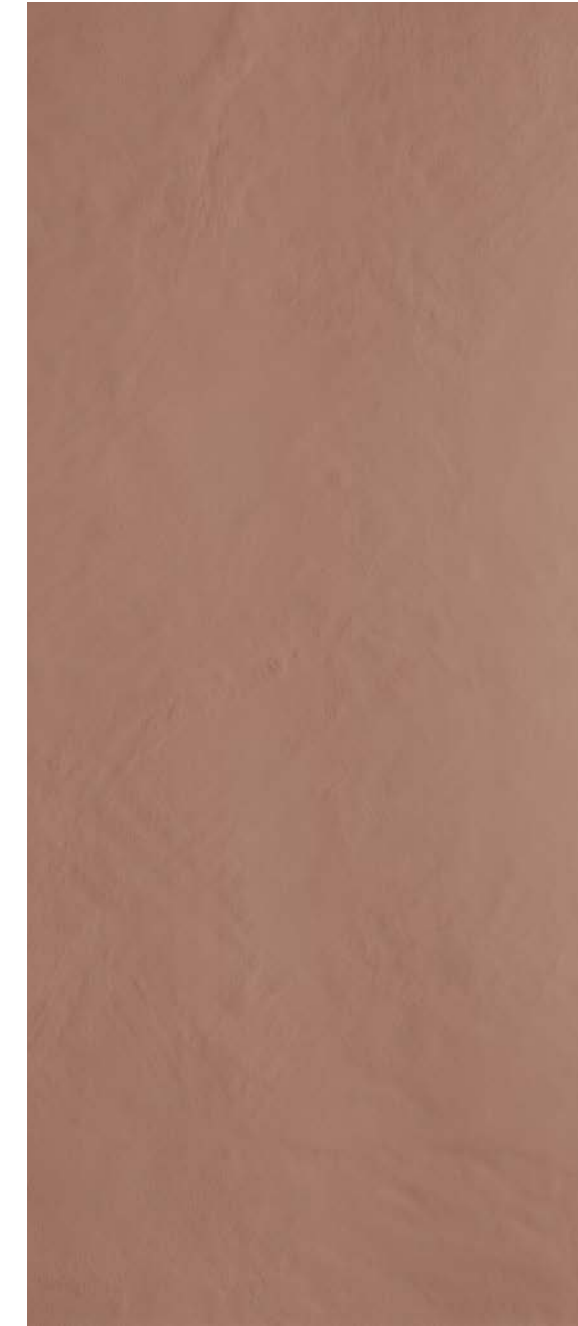


6 mm
33x120x5 . 12,99"x47,24"x1,97"
gradino lineare LL
RES082



6 mm
33x120x5 . 12,99"x47,24"x1,97"
gradino angolare LL
RES089

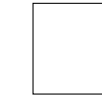
Suggested grout
120 . Black



SIZES & SURFACES



120x278*
47,24"x109,45"



120x120
47,24"x47,24"



60x120
23,62"x47,24"

Natural
Rettificato | Rectified |
Rectifié | Rektifiziert

6 mm

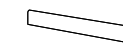
120x278 . 47,24"x109,45"
RES222

120x120 . 47,24"x47,24"
RES183

60x120 . 23,62"x47,24"
RES197



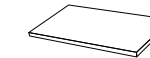
6 mm
5x30 . 1,97"x11,81"
listello
RES264



6 mm
8x120 . 3,15"x47,24"
battiscopa
RES204



6 mm
33x120x5 . 12,99"x47,24"x1,97"
gradino lineare LL
RES206



6 mm
33x120x5 . 12,99"x47,24"x1,97"
gradino angolare LL
RES207

Suggested grout
134 . Silk

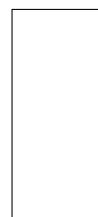


47 RES ART

res art



SIZES & SURFACES



120x278*
47,24"x109,45"



120x120
47,24"x47,24"



60x120
23,62"x47,24"

Natural
Rettificato | Rectified |
Rectifié | Rektifiziert

6 mm

120x278 . 47,24"x109,45"
RES238

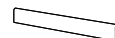
120x120 . 47,24"x47,24"
RES232

60x120 . 23,62"x47,24"
RES234

OLIVE

6 mm
5x30 . 1,97"x11,81"
listello
RES266

Suggested grout
115 . River Grey



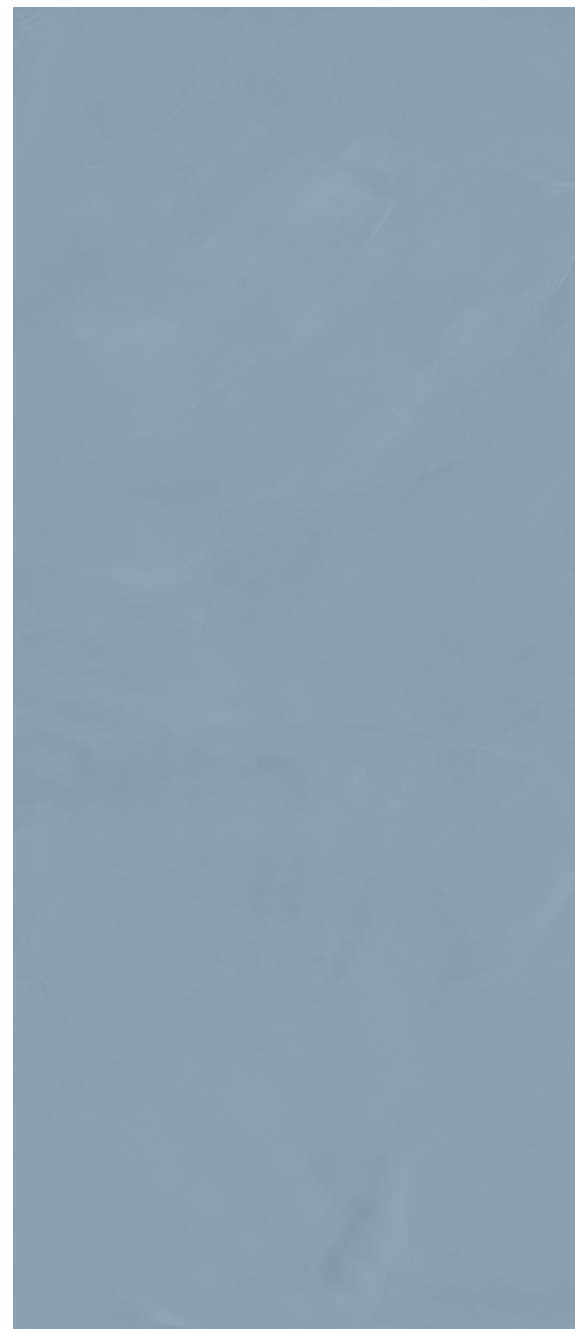
6 mm
8x120 . 3,15"x47,24"
battiscopa
RES248



6 mm
33x120x5 . 12,99"x47,24"x1,97"
gradino lineare LL
RES250



6 mm
33x120x5 . 12,99"x47,24"x1,97"
gradino angolare LL
RES252



SIZES & SURFACES



120x278*
47,24"x109,45"



120x120
47,24"x47,24"



60x120
23,62"x47,24"

Natural
Rettificato | Rectified |
Rectifié | Rektifiziert

6 mm

120x278 . 47,24"x109,45"
RES239

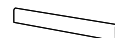
120x120 . 47,24"x47,24"
RES233

60x120 . 23,62"x47,24"
RES235

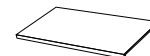
AVIO

6 mm
5x30 . 1,97"x11,81"
listello
RES267

Suggested grout
170 . Crocus Blue



6 mm
8x120 . 3,15"x47,24"
battiscopa
RES249



6 mm
33x120x5 . 12,99"x47,24"x1,97"
gradino lineare LL
RES251



6 mm
33x120x5 . 12,99"x47,24"x1,97"
gradino angolare LL
RES253

res art



SIZES & SURFACES



120x278*
47,24"x109,45"



120x120
47,24"x47,24"



60x120
23,62"x47,24"

Natural
Rettificato | Rectified |
Rectifié | Rektifiziert

6 mm

120x278 . 47,24"x109,45"
RES295

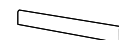
120x120 . 47,24"x47,24"
RES292

60x120 . 23,62"x47,24"
RES293



6 mm
5x30 . 1,97"x11,81"
listello
RES300

Suggested grout
132 . Beige 2000



6 mm
8x120 . 3,15"x47,24"
battiscopa
RES296

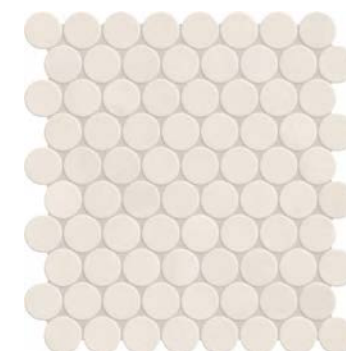


6 mm
33x120x5 . 12,99"x47,24"x1,97"
gradino lineare LL
RES297

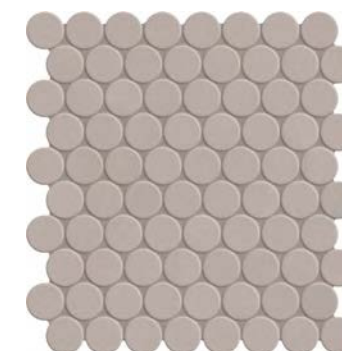


6 mm
33x120x5 . 12,99"x47,24"x1,97"
gradino angolare LL
RES298

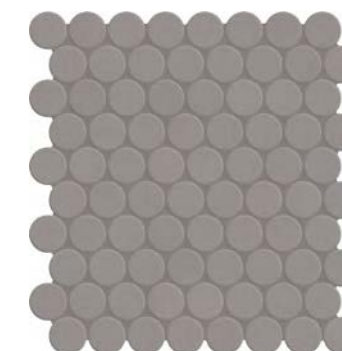
MOSAICO BALL



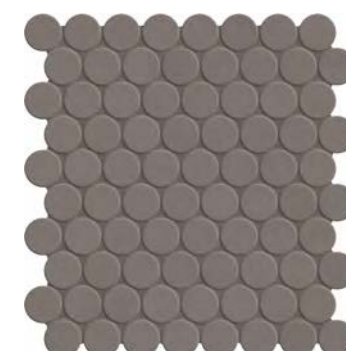
TALC
6 mm
28,8x31,2 . 11,34"x12,28"
RES171



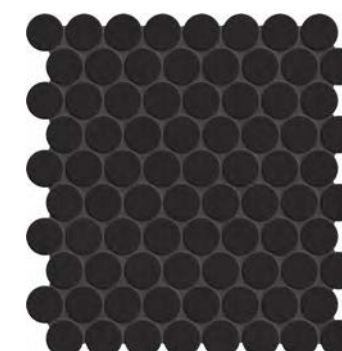
ASH
6 mm
28,8x31,2 . 11,34"x12,28"
RES172



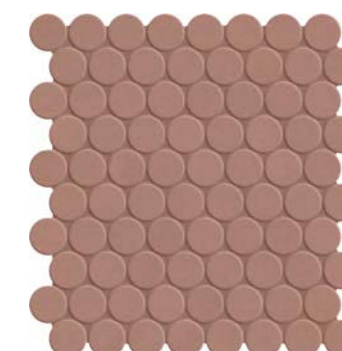
POWDER
6 mm
28,8x31,2 . 11,34"x12,28"
RES173



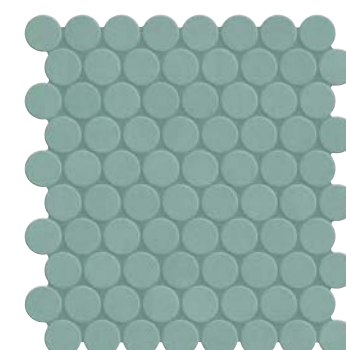
MUD
6 mm
28,8x31,2 . 11,34"x12,28"
RES174



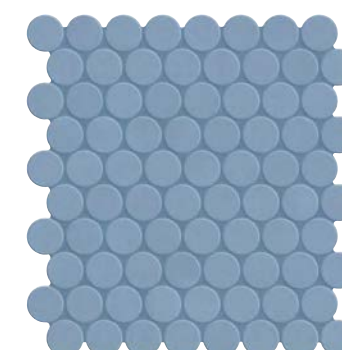
LAVA
6 mm
28,8x31,2 . 11,34"x12,28"
RES175



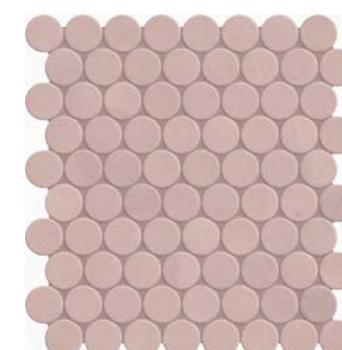
POTTERY
6 mm
28,8x31,2 . 11,34"x12,28"
RES176



OLIVE
6 mm
28,8x31,2 . 11,34"x12,28"
RES254



AVIO
6 mm
28,8x31,2 . 11,34"x12,28"
RES255

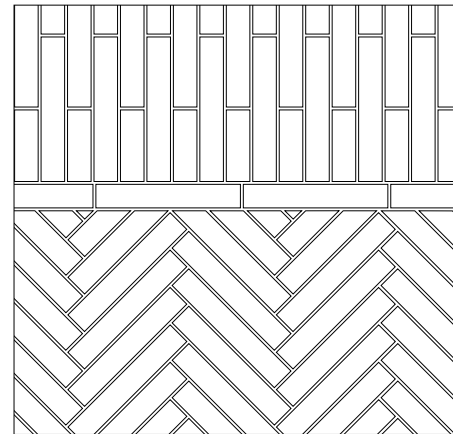
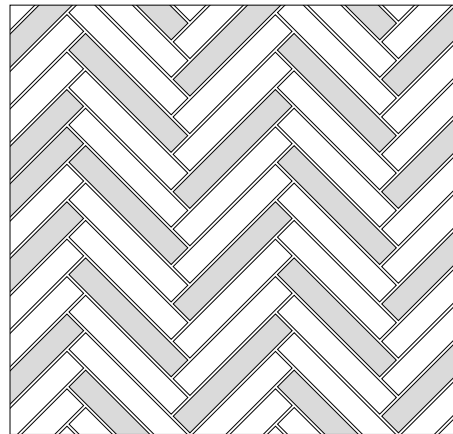
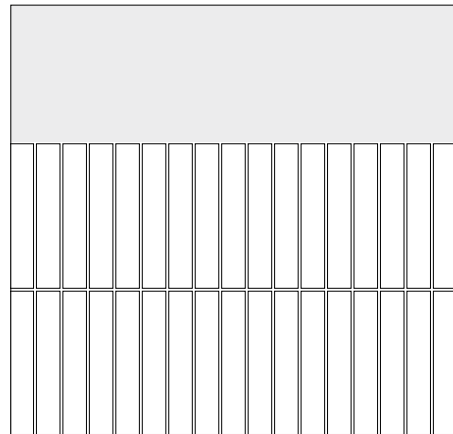
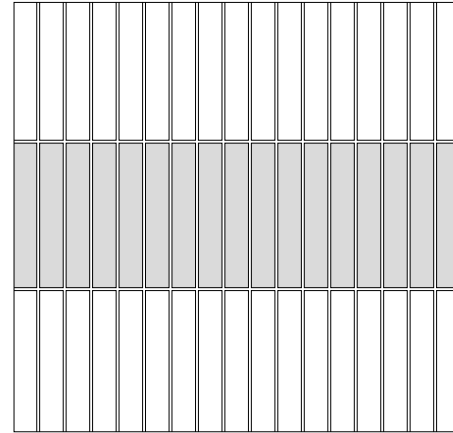
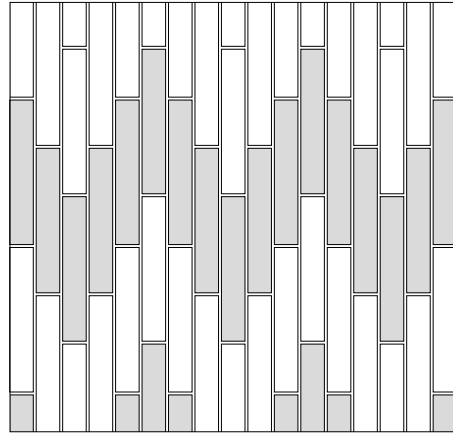
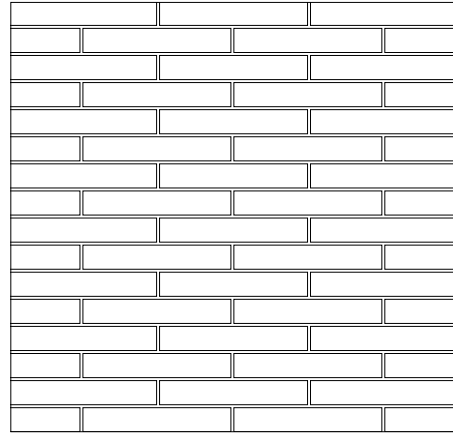


CAMEO
6 mm
28,8x31,2 . 11,34"x12,28"
RES299

res art

LISTELLO

Alcuni suggerimenti di posa | Laying suggestions | Quelques conseils de pose | Einige Empfehlungen zur Verlegung



imballi

Packages | Emballages | Verpackungen

	pz / box	m ² / box	kg / box	box / pallet	m ² / pallet	kg / pallet	m ² x pcs.	kg x m ²	kg / crate	total kg	dimensione esterna cassa crate overall dimensions
M² SQM											
<i>Thickness 6 mm</i>											
120x278 47,24"x109,45" Rettificato	1	3,33	51,61	18	59,94	929,00	3,33	15,50	101	1030,00	291x134x31,5 cm
120x120 47,24"x47,24" Rettificato	2	2,88	44,64	20	57,60	892,80	1,44	15,50	54	946,80	130,2x130,2x40 cm
60x120 23,62"x47,24" Rettificato	2	1,44	22,32	40	57,60	893,00	-	-	-	-	-
5x30 1,97"x11,81" Listello	33	0,495	7,67	-	-	-	-	-	-	-	-
PZ PCS											
<i>Thickness 6 mm</i>											
28,8x31,2 11,34"x12,28" mosaico ball	6	-	8,22	solo scatole complete complete boxes only à la boîte complète nur kartonsweise							
8x120 3,15"x47,24" battiscopa	7	-	10,50	solo scatole complete complete boxes only à la boîte complète nur kartonsweise							
33x120x5 12,99"x47,24"x1,97" gradino lineare LL	2	-	15,00	solo scatole complete complete boxes only à la boîte complète nur kartonsweise							
33x120x5 12,99"x47,24"x1,97" gradino angolare LL	1	-	7,50	solo scatole complete complete boxes only à la boîte complète nur kartonsweise							

caratteristiche tecniche



Technical characteristics | Caracteristiques technique | Technische eigenschaften

Lastre di ceramica in gres porcellanato - Gruppo Bla UGL (UNI EN 14411_G) | Porcelain stoneware slabs - Gruppe Bla UGL (UNI EN 14411_G) | Dalles en céramique en grès céram - Group Bla UGL (UNI EN 14411_G) | Keramikplatten aus Feinsteinzeug - Groupe Bla UGL (UNI EN 14411_G)

	Metodo di prova Test method Méthode d'essai Prüfmethode	Requisiti prescritti Required value Valeur requise Vorgeschriebener Wert	Risultato Results Résultat Ergebnis		Valutazione Valutation Évaluation Bewertung
			L < 120 cm	L ≥ 120 cm	
Lunghezza e larghezza Length and width Longueur et largeur Länge und Breite Spessore Thickness Epaisseur Stärke Rettilinearità degli spigoli Edge straightness Rectitude des arêtes Rechtlinigkeit der Kanten Ortogonalità Rectangularity Orthogonalité Rechtwinkligkeit Planarità Planarity Planéité Rechtwinkligkeit Qualità della superficie Surface quality Qualité de la surface Oberflächenqualität	UNI EN ISO 10545-2	± 0,6% ± 2 mm	± 0,6% ± 0,5 mm	± 0,6% ± 0,9 mm	Conforme Compliant Conforme Konform
		± 5% ± 0,5 mm	± 5% ± 0,5 mm	± 3% ± 0,5 mm	Conforme Compliant Conforme Konform
		± 0,5% ± 1,5 mm	± 0,5% ± 1,5 mm	± 0,5% ± 1,5 mm	Conforme Compliant Conforme Konform
		± 0,5% ± 2 mm	± 0,5 % ± 1 mm	± 0,5 % ± 2 mm	Conforme Compliant Conforme Konform
		± 0,5% ± 2 mm	± 0,5 % ± 2 mm	± 0,5 % ± 2 mm	Conforme Compliant Conforme Konform
≥ 95%	Conforme Compliant Conforme Konform	Conforme Compliant Conforme Konform	Conforme Compliant Conforme Konform		
Assorbimento d'acqua Water Absorption Absorption d'eau Wasseraufnahme	UNI EN ISO 10545-3	≤ 0,5%	≤ 0,1%		Conforme Compliant Conforme Konform
		Resistenza alla flessione Bending strength Resistance a la flexion Biegezugfestigkeit	Modulo di rottura Modulus of rupture Module de rupture Bruchlast R average ≥ 35 N/mm ² R min ≥ 32 N/mm ² Sforzo di rottura Breaking strength Effort de rupture Bruchkraft h ≥ 7,5 mm; S > 1300 N h < 7,5 mm; S > 700 N	h = 6 mm; R ≥ 50 N/mm ²	Conforme Compliant Conforme Konform
Resistenza all'abrasione profonda Deep abrasion resistance Résistance à l'abrasion profonde Tiefenverschleißbeständigkeit	UNI EN ISO 10545-6			V ≤ 175 mm ³	h = 6 mm; V ≤ 130 mm ³
		Resistenza agli sbalzi termici Resistance to thermal shock Résistance aux écarts de température Temperaturwechselbeständigkeit	UNI EN ISO 10545-9	Resistente Resistant Résistant Widerstandsfähig	Resistente Resistant Résistant Widerstandsfähig
Resistenza al gelo Frost resistance Résistance au gel Frostbeständigkeit	UNI EN ISO 10545-12			Resistente Resistant Résistant Widerstandsfähig	Ingelivo Frost proof Ingelif Frostsicher

54 RES ART

Lastre di ceramica in gres porcellanato - Gruppo Bla UGL (UNI EN 14411_G) | Porcelain stoneware slabs - Gruppe Bla UGL (UNI EN 14411_G) | Dalles en céramique en grès céram - Group Bla UGL (UNI EN 14411_G) | Keramikplatten aus Feinsteinzeug - Groupe Bla UGL (UNI EN 14411_G)

	Metodo di prova Test method Méthode d'essai Prüfmethode	Requisiti prescritti Required value Valeur requise Vorgeschriebener Wert	Risultato Results Résultat Ergebnis		Valutazione Valutation Évaluation Bewertung
			L < 120 cm	L ≥ 120 cm	
Resistenza all'attacco chimico Chemical resistance Resistance a l'attaque chimique Beständigkeit gegen chemikalien Acidi e basi ad alta e bassa concentrazione High- and low-concentration acids and bases Acides et bases à haute et basse concentration Säuren und Basen mit hoher und niedriger Konzentration	UNI EN ISO 10545-13	Valori dichiarati Declared values Valeurs déclarées Erklärte Werte B minimo B minimum B minimum Mind. B	A; LA; HA		Conforme Compliant Conforme Konform
		Resistenza alle macchie Stain resistance Resistance aux taches Fleckenbeständigkeit	UNI EN ISO 10545-14	Minimo Classe 3 Minimum Class 3 Classe 3 minimale Mindestklasse 3	Valori dichiarati Declared values Valeurs déclarées Erklärte Werte
Resistenza dei colori alla luce Colour resistance to light exposure Résistance des couleurs à la lumière Farbechtheit unter Lichteinfluss	DIN 51094			Resistente Resistant Résistant Widerstandsfähig	Resistente Resistant Résistant Widerstandsfähig
		Resistenza allo scivolamento a piedi nudi Slip resistance with bare feet Résistance au glissement pieds nus Rutschfestigkeit bei nackten Füßen	DIN EN 16165_A	Da A a C From A to C De A à C Von A bis C	A
Resistenza allo scivolamento a piedi calzati Slip resistance with shod feet Résistance au glissement des chaussures Rutschfestigkeit bei beschuhten Füßen	DIN EN 16165_B			Da R9 a R13 From R9 to R13 De R9 à R13 Von R9 bis R13	R 9
		Resistenza allo scivolamento DCOF Skid resistance DCOF Résistance au glissement DCOF Rutschhemmung DCOF	ANSI A 137.1:2012	> 0,42 wet	> 0,42 wet
Resistenza allo scivolamento PENDULUM Skid resistance PENDULUM Résistance au glissement PENDULUM Rutschhemmung PENDULUM	BS EN 16165_C			on request ≥ 36	dry rubber 4S: ≥ 36* wet rubber 4S: on request ≥ 36*
		Resistenza allo scivolamento PENDULUM Skid resistance PENDULUM Résistance au glissement PENDULUM Rutschhemmung PENDULUM	AS 4586	on request P3	P3: on request**
Resistenza allo scivolamento PENDULUM Skid resistance PENDULUM Résistance au glissement PENDULUM Rutschhemmung PENDULUM	UNE-ENV 12633			on request Class 2	Class 2 on request**
		Reazione al fuoco Fire reaction Résistance au feu Feuerfestigkeit	UNI EN 13501-1	Resistente Resistant Résistant Widerstandsfähig	Resistente A1 FL Resistant A1 FL Résistant A1 FL Widerstandsfähig A1 FL

* Con trattamento su richiesta. Valore da verificare su ogni singolo lotto produttivo | With treatment available on request. Check rating for each production batch | Avec traitement sur demande. Valeur à vérifier sur chaque lot de production | Auf Anfrage mit Behandlung. Wert bei jeder einzelnen Charge des Produktes zu prüfen

** Valori dichiarati ottenuti da test di laboratorio. Possono subire variazioni in base al lotto produttivo | Stated values are obtained from laboratory tests. They may vary depending on the production batch | Valeurs déclarées basées sur des essais en laboratoire. Peuvent subir des variations en fonction du lot de production | Die angegebenen Werte basieren auf Labortests. Es kann von Charge zu Charge zu Abweichungen kommen

55 RES ART

Maggiori informazioni per consigli di posa e manutenzione del prodotto su: www.fondovalle.it
 For more information about laying and product maintenance, please visit: www.fondovalle.it | Pour de plus amples informations relatives aux conseils de pose et à l'entretien du produit, visitez le site : www.fondovalle.it | Weitere Produktinfos und Verlege- und Wartungsratschläge siehe: www.fondovalle.it



AD: Marketing Dept.

02/2025

© Ceramica Fondovalle S.p.A.

È vietata la riproduzione, totale e parziale del catalogo in tutte le sue forme.

Reproduction of this printed catalogue totally or partially, is forbidden.

Ceramica Fondovalle si riserva di apportare, qualora lo ritenesse opportuno, eventuali modifiche di natura tecnica o formale ai dati riportati in questo strumento. I colori sono puramente indicativi.

Ceramica Fondovalle reserves the right, when it deems necessary, to make technical and formal changes to the data included herein. The colours are purely illustrative.



**ITALCER - WINNER OF THE
2022 SUSTAINABILITY AWARD**

FONDOVALLE

Ceramica Fondovalle S.p.A.

Via Rio Piodo, 12
41053 Torre Maina, (MO) Italy
T. +39 0536 934211
F. +39 0536 934250
www.fondovalle.it

A company part of

ITALCER
GROUP
DESIGN SURFACES